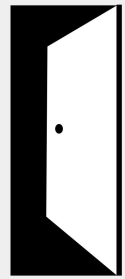


SPS Reopening



Phase 2: Full In-person Learning

Sudbury Public Schools School Committee

March 8, 2021

State & Federal Context

Mitigating Health & Safety Risks

- Site improvements
- Masking & Personal Safety Routines
- Social Distancing
- Surveillance Testing (Pooled)
- Vaccination

Increasing In-School Learning

- Student Mental Health
- Equity and Access
- Absenteeism
- Learning Loss
- At-Risk Populations

We anticipate further guidance from DESE regarding requirements for student learning time.

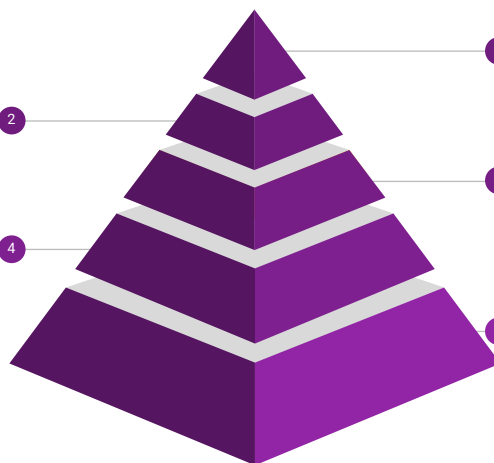
Reopening Guiding Principles

- Layer multiple mitigation strategies to ensure safety for staff and students;
- Prioritize student to classroom teacher assignment;
- Maintain high-quality models for all students and requisite supports for educators.



Expand
Pooled testing, vaccination opportunities for k12 staff, revised student learning time guidelines, increase in-person learning, maintain remote option, create tented outdoor learning spaces, enhance video & audio capabilities

Reopen & Refine
Increase in-person learning for 'at-risk' students, provide at-home materials and supports, improve technology, identify curricular and instructional supports.



Recovery

Assess student learning and wellness, provide additional learning opportunities through extended and school-year services.

Monitor

Rapid Antigen testing, vaccinate Phase 1 staff

Mitigate

Masking, hand washing, social distancing, cohorting, enhanced air filtration, enhanced disinfecting, contact tracing.

Timeline



Hybrid "B"

Full day for students in the Hybrid "B" cohort. Some students in Cohort "C" may also attend. Remote students follow typical Friday schedule.

Asynchronous Elementary

Early Release day. Instructional materials will be provided by the Teaching & Learning Team to allow for educator preparation & planning.

Full Day PD

Educator preparation and planning. No school for students.

Elementary In-Person

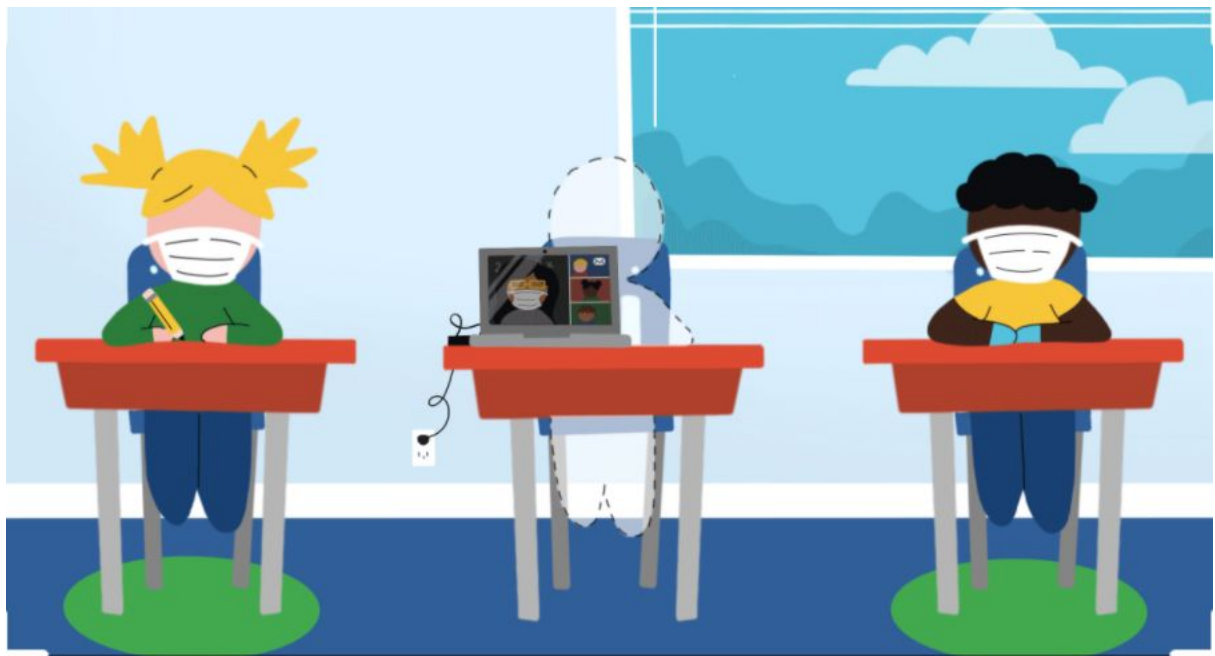
Elementary schools open for 5-day in-person instruction. Remote students participate through live streaming and educator directed instruction

Asynchronous Middle School

Early Release day. Independent work provided by MS teachers to allow for educator preparation & planning

Middle School In-Person

Middle school opens for 5-day in-person instruction. Remote students remain in designated remote cohort



Elementary Learning Model

Hybrid A + Hybrid B + Cohort C

3 foot spacing when masked
6 foot spacing when unmasked

In-person specialist classes
Instrumental Music Outside, when possible
Potential shift in SPED service schedule
Potential change to Tier 2 support schedule

*Due to class sizes, there may be changes to room location

Hybrid + Remote

Live Streaming or Synchronous Presentation using Google Meet of whole class instruction and meetings

Synchronous small group and individualized instructional/collaboration blocks using Google Meet

Specialized Instruction per student learning plan/IEP using Google Meet

Asynchronous independent student work blocks

Live streaming or Synchronous Presentation of specialist classes (Spanish, Library, Art, Music, PE)

Asynchronous Independent Lunch/Recess/Movement Breaks

Enhanced audio and video capabilities

Teacher + SPED supports

Teacher + SPED supports + Concurrent Instructor

**LUNCH INSIDE
@ 6 feet**



**CLASSROOM
SETUP
@ 3 foot
distancing**



Middle School Learning Model

Hybrid A + Hybrid B + Cohort C

3 foot spacing when masked

6 foot spacing when unmasked

Maintain Five-Day Schedule

In-person & online Unified Arts/World Language classes

Potential shift in SPED service schedule

Potential change to Tier 2 support schedule

Strive to remain with assigned team/teachers

*Due to class size, there may be changes to room assignment, team/teacher or limited live streaming

Remote

No change to model

**LUNCH INSIDE
@ 6 foot distancing**



**CLASSROOM SETUP
@ 3 foot distancing**

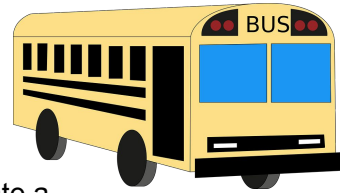


Special Education



- All special education services will continue per IEP and/or COVID Learning Plan.
- During the week prior to and during the first weeks of this transition, special education services will look different given the need to prioritize the social-emotional well-being and the reintegration of students.
- Special education teams will partner with general education teams to integrate student learning goals with classroom routines.
- IEP meetings will need to be rescheduled.
- IEP meetings will continue to be virtual.
- Students will be supported with a thoughtful transition on an individual basis if needed.
- Extended School Year summer programming will be in-person.

Transportation



- Under the CDC COVID-10 Guidance for School Bus Transportation, students can be seated two to a seat. The windows on the bus must be down two inches to create a safe air exchange.
- Students who are currently registered and riding the bus will continue to remain registered and will be transported for five days per week beginning on April 5th/April 26th. Routes have been combined and modified to accommodate both cohort A and B.
- There are a limited amount of empty seats at this time. The transportation department will send additional information with specific instructions on registering for any empty seats that are available.

Want to know more?

- [CDC Operational Strategy for K-12 Schools](#)
- [DESE Desktop](#)
- [Pooled Testing Permission](#)
- [SPS Dashboard](#)
- SPS FAQ
- Attend Superintendent PIE (Parent Information Exchange)
 - March 11 @ 5-6 PM
- Attend Building Based PTO/Principal Meeting